

# Social Habitat Gathering Planning Guide

A Nest City Social Habitat is a social space where we explore three things simultaneously: how to make city habitats that get us where we want to go, how to practice being citizens who serve cities, and how to 'fly' in ways that allow our cities to serve citizens. These three things form The Nestworks, a model that enables the emergence of possibilities, clear purpose and priorities, and skilful implementation (what we will do and how we will do it).



You may find the Nest City Social Habitat Guidelines helpful.

## designing a gathering

Below are elements to consider when planning a gathering. Notice where you need to start and star there. There's no perfect order to this, yet they all need attention.



### Hosts

Who are the best people to host this conversation? What strengths do they need to embody?

### Participants

Who do we expect to participate? What is their connection to the purpose? What do they need to fully participate?

### Harvest

What will the gathering create? Are you making something? How do you want to record your new understanding. Is it formal or informal?

### Design

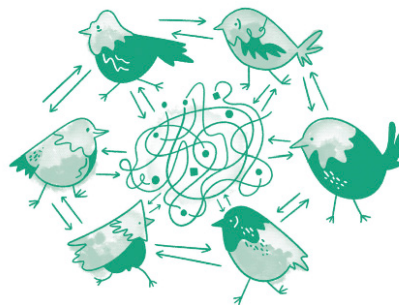
Are there any specific design elements we need to factor in?

#### Resources:

- [www.artofhosting.org](http://www.artofhosting.org)
- [www.thecircleway.net](http://www.thecircleway.net)
- [www.bethsanders.ca](http://www.bethsanders.ca)

### Purpose

What challenges or opportunities are we facing? What is happening that makes this gathering important for everyone who will attend? What do we hope this gathering will inspire / create? What is the inspiring question that will bring people together?



### Invitation

What kind of conversation are we inviting people into? What do they need to know so they can choose if the gathering is a good fit. What are the logistical things they need to know, as well as the what to expect at the gathering?

### Container

What is the quality of social habitat you wish to create? Does the gathering need to hold conflict or trauma? Or is it light and festive?

### Principles


What agreements need to be in place, about how you will work together? Are there any assumptions you are making that need to be made explicit?

### Space and Logistics

What kind of space will best serve our gathering? What are its key features? What arrangements are needed to secure the space and prepare it for our gathering?



# design agenda template

<b>Host</b> <small>WHO leads the activity</small>	<b>Topic</b> <small>WHAT we're doing</small>	<b>Activity / Process</b> <small>a description of HOW we'll do the activity</small>	<b>Outcomes</b> <small>WHY we chose the activity</small>
	Set up	Prepare for activities and harvest	
	Weclome	Welcome, introductions, purpose, review agenda	
	Check in	An activity to "land" people in the room	
		<p>Activities to reach toward the purpose</p> 	
	Next Steps	What happens next?	
	Check out	An activity to close the gathering	
	Seeds	Organize harvest, identify next steps for hosts	